

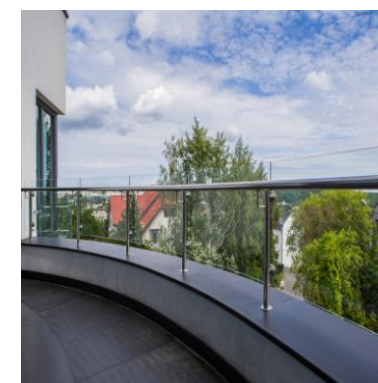


Rezydencja Perła
Księcia Kiejstuta

INFORMANT

Apartament card 2

View of the Residence



The Prince's Residence Kiejstuta at 10 Kiejstuta Street in Gdynia was located in a quiet residential building on the border between Orłów and Mały Kacka - one of the most prestigious and architecturally and landscape attractive parts of the Tri-City. The investment harmoniously blends in with the surrounding landscape of the Tri-City Landscape Park.



Rezydencja Perła
Księcia Kiejstuta

INFORMANT

Apartament card 2

Details of offer: Apartament 2

Transaction type	sale	Street	Kiejstuta 10
Type of offer	exclusive	Position	In the city center
Type of law	propert	Property Type	apartament
Market	original	Surface	80,57 m ²
Voivodship	pomeranian	Building type	apartament
City	Gdynia	Number of stories	four
District	Mały Kack	Finishing standard	high





A detailed description of the investment

Investment description.

The residence of Prince Kiejstut with 5 elite apartments with an underground garage with 9 parking spaces and an elevator was designed in the style of modernist Gdynia of the 1930s. The block was given a unique shape, in addition, an interesting style was achieved using contrasting colors of the facade, crystal-clear white combined with graphite. The stylish four-storey residence not only maintains an intimate character, but thanks to various amenities it is a place of safe and pleasant rest. The residence has modern solutions designed that give a sense of comfort and luxury. As a result, the residence exudes warmth and elegance.

Investment details:

- external walls - SILKA - clad with 15 cm thick mineral wool, STO system façade,
- staircases - door portals and lift portals made of natural stone - granite,
- KONE noiseless elevator,
- entrance stairs - stone, flame granite,
- entrance door to the building - aluminum, warm,
- solar solars for heating utility water,
- installations: - water - equipped with water softener, sewage, electric, lightning protection,
- small architecture, landscaped garden surrounded by a profiled steel fence,
- a building adapted for the disabled, a stone driveway - granite



Rezydencja Perła
Księcia Kiejstuta

INFORMANT

Apartament card 2

Each of the apartments has, among others:

- large, spacious interiors with functional layout, area of approx. 80 m²,
- above average height from 285 cm to 300 cm,
- 2 parking spaces belonging to the underground garage,
- associated cellar cells with an area from 6 m² to 10 m²,
- central vacuum cleaner installation,
- alarm system in the apartment, security door,
- 3 wooden - aluminum SOKÓŁKA windows, ThermoLine 9.2 cm, AERECO diffusers,
- balconies and terraces - lined with flamed granite, stainless steel and glass balustrades,
- internal and external window sills - granite,
- bathroom and toilet underfloor heating and towel rail radiators TERMA, with electric heater,
- bathroom and toilet equipment - water and sewage approaches.

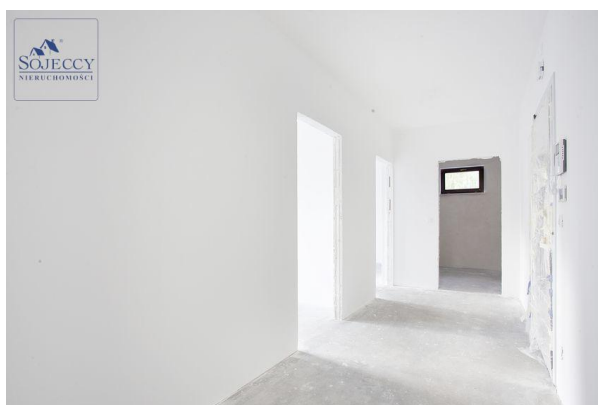
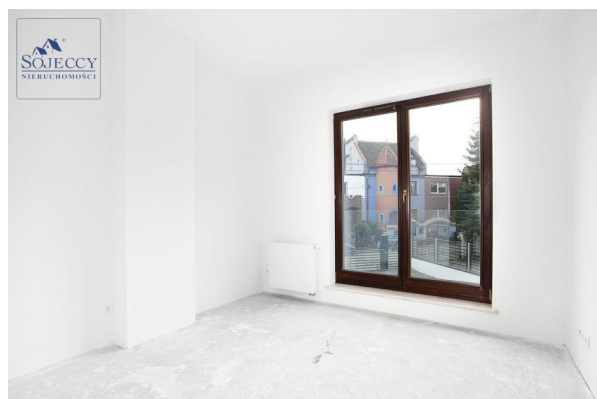
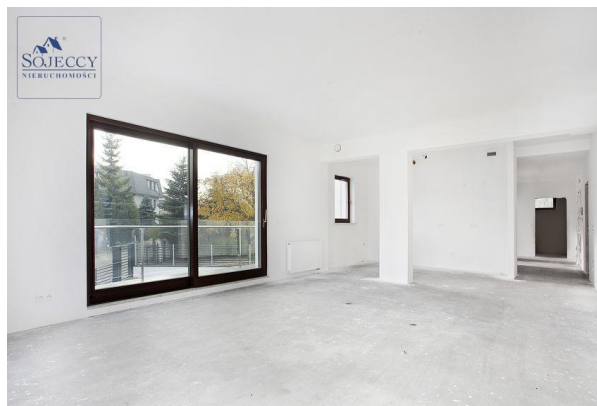


Rezydencja Perła
Księcia Kiejstuta

INFORMANT

Apartament card 2

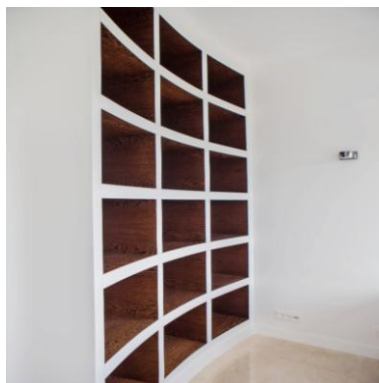
The interior of the apartment:



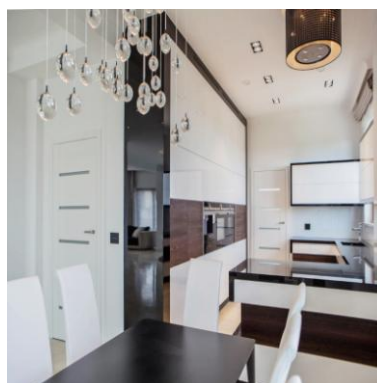
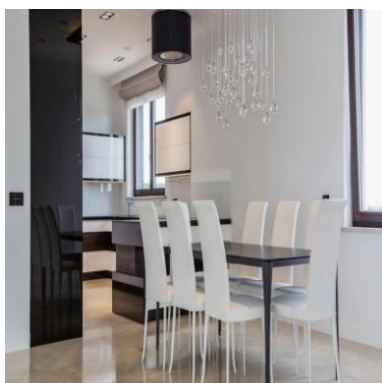
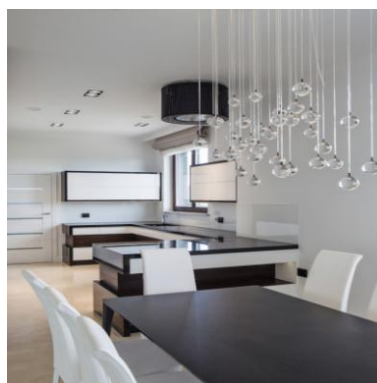
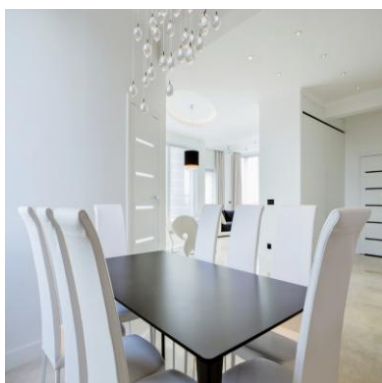


An example of the arrangement of one of the apartments:

1. Cabinet

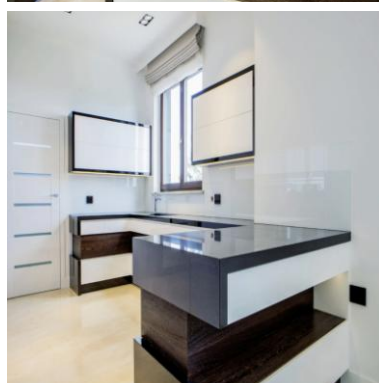
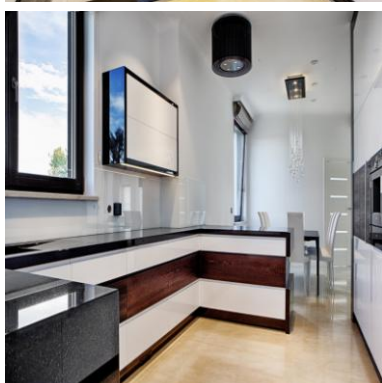
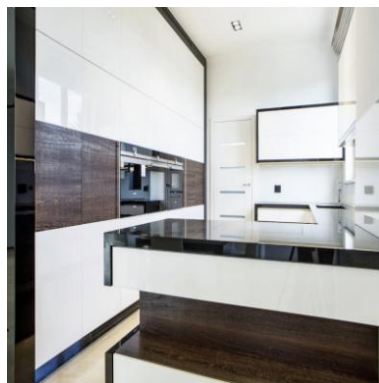
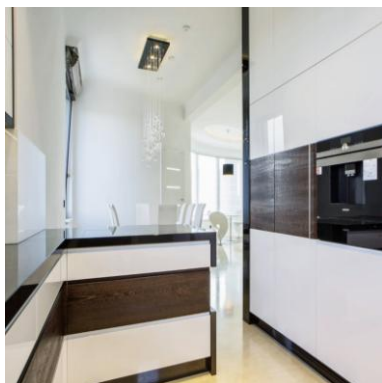


2. Dining Room

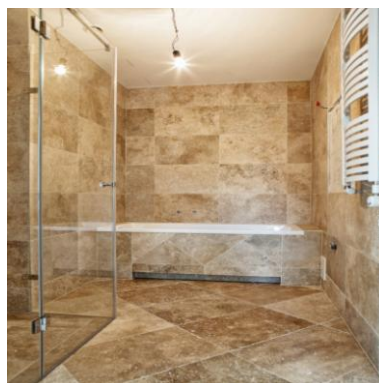
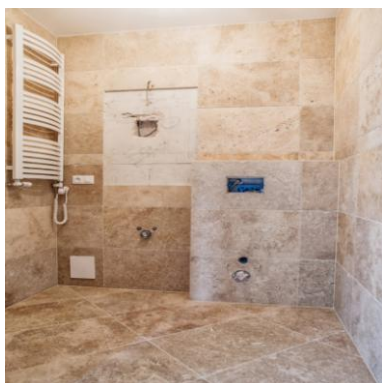


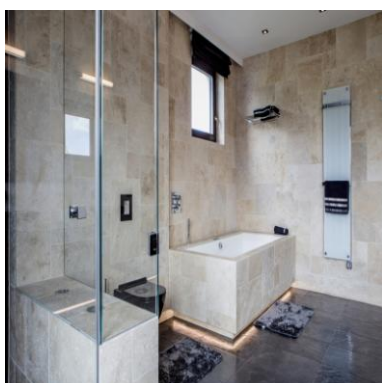


3. Kitchen

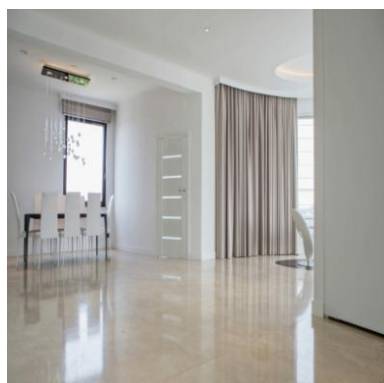
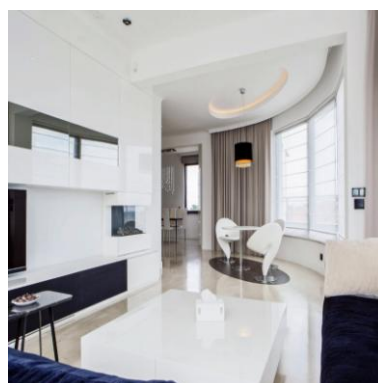
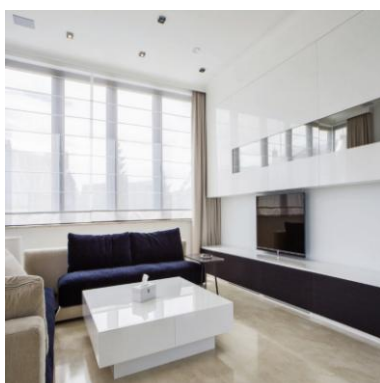
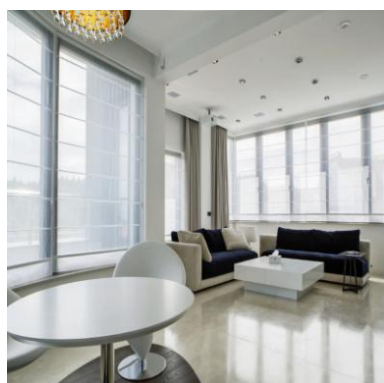


4. Bathroom





5. Salon



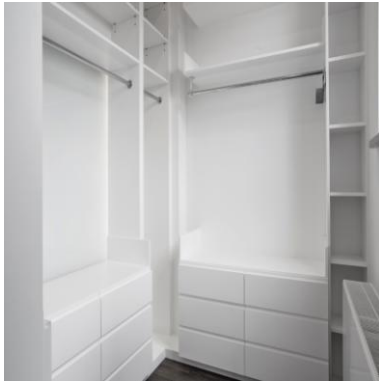
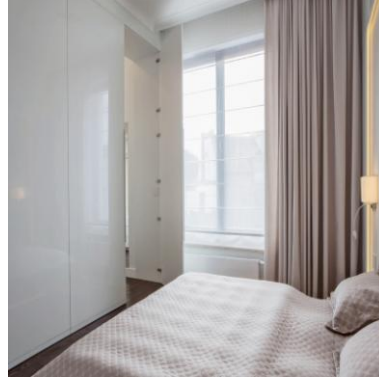


Rezydencja Perła
Księcia Kiejstuta

INFORMANT

Apartament card 2

6. Bedroom



7. Toilet

